

Courtesy Costs Nothing

Margaret Thompson Editor.



AS we grow older sometimes we become more anxious about our own well being. Our instinct for survival is to ensure that our needs are met,---- instantly! I recently witnessed this in our coffee queue at the monthly meeting. So keen can we become not to be left out that, dare I say it, pushing and shoving can ensue! The 'coffee' has always presented problems with such a wonderful, large and enthusiastic group at our meetings and patience is needed.

I adopt the same strategy for obtaining my coffee at our meetings, as I do when boarding an aircraft. There, I sit at the 'gate' until all that hectic queue has gone and the BA staff appear to ask me if I am for this flight. Replying in the affirmative I get VIP treatment to get me to my seat. On board they are already handing round the water and as the newspapers are running out I quietly ask if I could please have 'The Times'. This is duly fetched from the first class cabin by a beaming steward.

Equally, if the coffee does run out, our illustrious secretary Yvonne rushes forth and gets a fresh pot. All hot and steamy. VIP treatment! And I have had ten minutes to catch up with the gossip so don't panic and try to be patient.



Taking advantage of the sudden return of Summer I fancied a wander in a beautiful garden to witness the glorious autumn colours and see what the professional gardeners are up to. The Savill Garden did not disappoint.



To our delight Halloween had come to the Queen Elizabeth Temperate House with a wonderful display of squashes, large and small, golds, reds and gray.

Photos MCT

The sun is shining again and my garden calls.

I planted g a r l i c about four weeks ago and I am thrilled to

see a myriad of tiny green shoots appearing. They have obviously enjoyed all that rain. Garlic needs a long growing season and will not be harvested until the longest day next

year when, hopefully, it will have swelled into super plump bulbs. Ridiculously, the purple sprouting broccoli for next spring, which I planted out in July, is already cropping!! What's all that about then? Makes good eating. All I have to do now is prune the roses, and the blackcurrants and cut down the old raspberries. Then all the garden will be ready for winter; oh and rake up the leaves; tidy the pond and---- Oh well a gardener's work is never done but soon it will be too dark in the evening so I will have to come in and sit by the fire and finish my grandson's jumper.

I took the precaution of making it 2 sizes too big as the one I did for his older brother was almost too small by the time I finished it!

Happy Days; draw the curtains, read a good book, get out the crosswords, knitting and embroidery, watch the telly as the clocks go back and the evenings grow longer and Stay warm and cosy.

Study Group Topics By Margaret Foster

Study Group Coordinator

Studygroups@watfordu3a.org.uk

AT LAST it rained, but why did it wait until I was going out for the day?

The 3rd London Architecture course will start on 6th January 2010; Members who have signed up for this course please let me have their £4 at the November meeting. This is early because December is 'PANTO TIME' so I will not be collecting money. There are a few places left so if you would like to join this excellent course please come and see me with your £4. In order for this course to run I need at least two volunteers from the members who will be attending to :-

1. collect, set up and return the laptop to Colin Richards.

2. collect and return David Burnell to Watford Met.Station.

If there are no volunteers it will not be possible for the course to run. The more volunteers the better because then we can organise a rota. The old saying 'many hands make light work' is true in this case.

A reminder for users of Kallkwik our agreement with them is for A4 Black & White only. Please do not ask them for anything else as they will have to refuse. I am pleased to say I have found their service excellent as have other users. I still have some 'Guidance for Using Kallkwik' information sheets. Would SGLs who have not had one please collect it from me and add it to the SGL Pack.

Unfortunately membership of 'Holiday French' at Watford Boys Grammar School is very low, The School has suggested changing the days and times in an effort to attract more members to: Tues 9am -10am or Thurs 9am-10am. The class has been temporarily closed to allow time for the new days and times to be put to our members. Lists will be available at the monthly meeting for members to sign if they wish to join this class.

Thank you to all the Study Group Leaders who have returned their survey, if you have not yet returned yours please do so A.S.A.P. The survey is not something I thought up to add to your work load, it was suggested at the SGLs meeting and the data from it will help us to have a wider view of how our U3A is working.

A safe and happy month to everyone, I hope to see you at the monthly meeting.

Committee Notes From our Chairman John Carleton



THERE was no committee meeting in October but business continued by email, with enquiries from new and existing members on a range of matters.

At the last count, ninety members had signed up for the Christmas lunch, which once again promises to be a merry occasion. There is still a little space for last minute applications before the closing date - **3rd November**. The Committee will next meet on **17th November**.



High Beeches in Sussex in Glorious Weather

by Jean Armstrong Photos
Diane Livesey

FOR the last trip of our 2009 season we travelled to High Beeches on the Southern High Weald of Sussex, just off the A23 near Handcross. We could give ourselves a leisurely start since the journey was not too long and our arrival was not planned till late morning. The gardens consist of 27

acres of rare plants, trees and shrubs, declared an exceptionally well-preserved example of a landscaped woodland garden dating from the early 20th Century. Because of the very dry and warm September we had, everyone had noticed how the leaves were turning early this year, so we were very hopeful that we would have a lovely day with some beautiful Autumn colour - sometimes mid-October is just too early. The weather forecast was for a lovely day for the extreme Southeast of England and it was quite correct - the sun once again shone for the Watford U3A Gardening Group. After a very easy trip down with a quick stop at Pease Pottage services we arrived early at High Beeches, however they were well prepared for us and allowed us in immediately. Some members headed straight for the tearoom for lunch, others sat in the sun and had lunch in the picnic area. The gardens are on a fairly steep hillside but we had lots of time to admire and enjoy the stunning views, the lovely autumn colour and the exceptionally wide and well labelled collection of trees and shrubs and stroll slowly in the warm sunshine, so we didn't notice too much the steep climb back up the hill, especially as the tearoom awaited with lovely refreshments and cream teas! It was a lovely day out and a fitting end to our 2009 programme - enjoyed by all.



acres of rare plants, trees and shrubs, declared an exceptionally well-preserved example of a landscaped woodland garden dating from the early 20th Century. Because of the very dry and warm September we had, everyone had noticed how the leaves were turning early this year, so we were very hopeful that we would have a lovely day with some beautiful Autumn colour - sometimes mid-October is just too early. The weather forecast was for a lovely day for the extreme Southeast of England and it was quite correct - the sun once again shone for the Watford U3A Gardening Group. After a very easy trip down with a quick stop at Pease Pottage services we arrived early at High Beeches, however they were well prepared for us and allowed us in immediately. Some members headed straight for the tearoom for lunch, others sat in the sun and had lunch in the picnic area. The gardens are on a fairly steep hillside but we had lots of time to admire and enjoy the stunning views, the lovely autumn colour and the exceptionally wide and well labelled collection of trees and shrubs and stroll slowly in the warm sunshine, so we didn't notice too much the steep climb back up the hill, especially as the tearoom awaited with lovely refreshments and cream teas! It was a lovely day out and a fitting end to our 2009 programme - enjoyed by all.

Vino Tinto Por Favor

by John Britten

IN September the Wine Appreciation Group concentrated upon wines from the Rioja region of Northern Spain. After a chequered history spanning several centuries, these wines have now achieved international recognition. Although producing both white and red wines, it is the latter for which the region is best known, with the Tempranillo grape being dominant.

We learned about the different oaking and maturing requirements of the four grades of red Rioja - from the youthful Joven to the more mature Gran Reserva - and generally agreed that the younger wines lacked the complexity and smoothness of the more senior grades. It was also remarked that whilst many Riojas are a blend of Tempranillo and Grenache, some are made with more Panache than others! On this occasion Tony had forsaken his normal supplier, and bought everything from Majestic Wine. This company has recently relaxed its policy of requiring a minimum purchase of twelve bottles, and will now sell (but not deliver) selections of only six. This month their Spanish wines were discounted by 25%, so our top wine - the Gran Reserva from Vina Alarde Bodegas Berberana - could be obtained for £8.99.

Membership of the Group has proved to be a very enjoyable way of learning how to identify, taste and enjoy wines from all over the world. We recently welcomed a few new members, but may have room for one or two more. Contact Jill for more details.

HAVE YOU BEEN DONE YET?

THERE has been a fantastic response from members in favour of the 'mug shots' of our Study Group Leaders and Committee Members. These are displayed at the monthly meeting so that we are easily found by folk who wish to speak to us. We know who we are! Hopefully! But many members, especially those new to our U3A, do not. From time to time small portraits will appear in the NL adjacent to your group or article. Again this identifies us and so raises the profile of our group.

Gerry Adams is a wonderful photographer. His work is of a professional standard. Indeed given another lifespan he could well be one of the eminent photographers of his day. He manages to produce very natural portraits by chatting away to us and quickly clicking the camera as we respond. It only takes seconds, so would any SGLs or Committee members who are have not yet been photographed please see Gerry in front of the stage, at the end of the next monthly meeting. *Ed.*

Strollers October by Dorelle Boardman photo by Don Brackfield

STROLLERS are generally known for their relaxed and leisurely attitude when it comes to physical exercise. We cover the ground at a gentle three miles or so per hour, enjoying the countryside but keeping our pub lunch firmly in mind as the object of the exercise. However, what do you think of the photograph?! Most of us had a go, with differing levels of enthusiasm, perhaps, but willing to try anything new. These marvellous exercise machines had been embedded in the ground in a part of the Leavesden Country Park for the enjoyment of casual walkers; what a great idea! Adding to our pleasure on this beautiful morning walk were the magnificent old trees, several mares with foals in two of the large fields we passed and - oh joy! - about a dozen goats, quite small, and all of them so clean and pretty. (I have a soft spot for goats.) In another enclosure we caught sight of ducks and huge geese, accompanied by other birds that were not so easily recognisable. One of them, apparently a goose of some kind, was a lovely shape - really big and round - it could have stepped out of a picture on a Dickens-inspired Christmas card. I fear for its fate in the next couple of months!

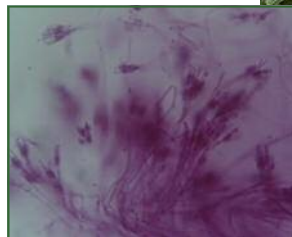


Science Interest September & October 2009 Fungi of All Sorts AND Amateur Radio by Brian Mee

ROSEMARY HOPEWELL is an expert on Fungi and gave us a most interesting and comprehensive talk on edible mushrooms, magic mushrooms and poisonous mushrooms including a list of victims of death by mushroom poisoning over the centuries! Her photos were amazing as she had pictures from all over Europe and they showed great detail of colour and shape. Fungi come in all sizes from microscopic ones that grow in the fuel pipes of jet planes to large brackets growing on trees, and if a fungal system is taken as one organism, they can be very widespread indeed, covering many square metres in area. Alexander Fleming's discovery of the fungus penicillin has saved many lives and he and his team were awarded a Noble Prize for their work in isolating the potent antibiotics.



L Penicillium & above Fly Algaric .. Courtesy of Wikipedia



In October it was 'CQ CQ' 'is anyone there?' Amateur Radio has so many aspects to it and Brian Hodgson gave a very interesting presentation explaining how he got involved about 50 years ago as one of the 6 million radio hams in the world! They operate over the full frequency range but in strict bandwidths. Call signs enable the expert to recognise the location of the caller, Morse code is still used but use of the phonetic alphabet is common. Foundation level amateurs can operate at 10W power, intermediates at 50W and full licence holders at 400W which gives access to other radio amateurs around the world. Aerials are a wonderful area of enterprise and height is no object. Neighbours sometimes object. When a contact is made sometimes post cards are exchanged and when 100 cards have been collected a certificate can be issued for the wall! The International Space Station has radio amateurs on board and they regularly talk with school students.

NB:- a SGL is needed from next March to lead this group.
Brian Hodgson, discussing with our members, the finer details of calling the world!

A Sunny Day in Essex by Valerie Webster

ON September 22nd the Food & Nutrition group enjoyed a beautiful sunny day in Essex. First stop Witham, a lovely Georgian town to visit the Farmers Market. At first locals, met by our coach driver, said there was no farmers market but perseverance led us to the market just 100 metres away. Isn't it typical that we know a lot about other places in our country but nothing about what is going on in our own locality ! The market was only small but everything on sale there was of such high quality that we could not resist a purchase or two.



Next stop was an 18th century coaching inn at Wickham Bishops called The Chequers where we ate lunch. Our final destination was Tiptree, home of the Wilkin factory producing high class jams and preserves. We were taken on a guided tour of some of the orchards by Chris Newham, the farm manager. He told us that Wilkins farmed 1,000 acres in Tiptree where they grew soft fruits such as raspberries, strawberries and loganberries. Their orchards had produced a bumper crop of plums this year after a poor harvest in the previous year. Not all fruits for their jams and preserves are produced by themselves but British fruits are grown for them in the locality and Wilkins are the biggest employer of local people. Oranges for marmalade are shipped over from Spain in huge cans and tropical fruits are purchased from many different countries. On the tour Chris pointed out the medlar, [above] an unusual fruit used to make medlar jelly and also the mulberry trees which are harvested by workers dressed from head to toe in white hooded overalls to protect their clothing from the juice. Following the tour we spent some time in the museum recording the history of Wilkins, then into the Jam Shop for purchases, followed by a delicious cream tea which Sylvia Ashford [above] really enjoyed. One of the most beautiful days this summer, we thoroughly enjoyed our day.

ATTENTION ALL WALKERS

www.walkinginengland.co.uk gives you, county by county, all the information you need for the best walking in the Country. Details of thousands of walks to download and print free, all the walking groups in the country, maps and walk books plus loads more information. So check out the website and find some new walks!

London Architectural Group

Thanks to David Burnell, this excellent and very popular course will be repeated for the third time starting on January 6th 2010. (See Study Group Coordinator's notes on page 1. Ed.) The culmination of the course saw five stalwarts of the group mixing with the locals, during an extremely interesting London visit, guided by David Burnell our more than capable Group Leader. **Story & Photo Terry Godfrey**



October 'Breast Cancer Awareness Month'

from Audrey Gynne

UP until the age of 70 we ladies are invited every three years to have a mammogram to detect early breast cancer. After this it is up to us to self-refer. This is not difficult. A phone call to Edgware Breast Centre, 020 895 14045 or 020 893 77344 will get us an appointment at our nearest screening centre.

Prompted by the sight of the large white mobile screening van in Sainsbury's car park at the Dome roundabout, I made my appointment. As an ex Macmillan Nurse myself I realize how important it is to keep up to date with these checks.

It was somewhat a surprise when I received a letter inviting me to attend Edgware Hospital for follow-up. I was not perturbed as I know most of the rechecks are for non-cancerous reasons.

Further mammograms, ultrasounds and biopsies awaited me. The breast care nurse allocated to me was very kind but said it looked a bit "iffy". The longest two weeks ever then followed until I went to St. Albans Hospital for the results.

It was confirmed that I had indeed got breast cancer. A 1cm tumour had developed in the last three years since my last mammogram. This was not palpable by me or the doctor.

Lumpectomy and removal of some of the glands under my arm and I am on the road to recovery. The cancer has been completely removed and there is no evidence of any spread into the lymphatics. What a relief! I have to have hormone treatment and radiotherapy to discourage any recurrence. This is the normal procedure after this operation. How different the story could have been had I not had this checkup.

80% of breast cancers occur in post-menopausal women so do think about this ladies.

Thank you very much Audrey for sharing this with us. Ed

Neil Holms-Smith, the arborealist



Photo Gerry Adams

gave us a very interesting and informative talk and showed us some beautiful slides, at our last monthly meeting. It has completely revised the way I look at

trees. Are they 'ancient' or senile' (nearly dead!!) and if hollow does it matter?. Look up at the canopy; is it healthy? How many life forms inhabit a tree? *Ed.*



Exploring London Osterley Park and Gardens

Story & photo by Pat Harding

OUR October trip was a visit to Osterley Park which is a mere eight miles from Piccadilly Circus and a stones throw from Heathrow Airport. As it was a cloudy day we could hear the planes but not see them! We had an easy journey and arrived in time for the coffee shop

to open. Later there was time to walk round the park and visit the walled garden and also the American garden which is in the process of being renovated.

After the talk at the meeting, a lot of the members were looking for veteran trees and I spotted six members holding hands round one example.

After lunch we had an introductory talk in the servants hall and then collected audio sets and explored. Osterley House was created in the late 18th century from a Tudor Mansion. The house had been empty since 1698 and two brothers Francis and Robert Child together with the architect Robert Adam designed and refined the house in the twenty years from 1761. The interior is the finest and most complete still in existence by Adam. The guides in each room were very helpful and several told us stories of the family and how the decorations and fittings came about. There was so much of interest I am certainly paying another visit.

The rain came while we were in the house so the complimentary buggy, back to the coach was well used. It was about a ten minute walk round the lake. Unfortunately the M25 again was very busy but after our busy day we sat back and let the driver take the strain. If possible next years visits will avoid the roadworks until finished.

This is an enormous oriental plane tree in Osterley Park, planted in 1755, with members of the Exploring London group measuring its girth, as instructed at the last monthly talk. It took eight people to do it, I believe. We all enjoyed the handset guided tour of the house later.



Photo Jan Palmer

Walking Group by Joan Manhire

IN 1878 an Act of Parliament granted 6000 acres of land for the recreation of Londoners. Its forests, open spaces and lakes became known as Epping Forest. Popular now with walkers and horse riders, it used to be a favourite hunting ground for Kings and courtiers. Henry VIII had had a Hunting Lodge built there, which is now used as a visitor centre and museum. Hoping for colourful autumn foliage we were disappointed, but we enjoyed finding several interesting and very attractive fungi, and by identifying features of the many veteran trees we saw, as described by our guest speaker Neil

Holms-Smith during our October General Meeting. (see L) Including, we think, specimens that could be described as pollard, coppice, bundle planting and layering. The lecture gave us an added dimension for a very happy and enjoyable nine mile walk.

Photo P Manhire



STUDY GROUP NEWS

Please keep 'The Study Group Diary' for Group Leaders contact numbers and times and venues of Study Group Meetings.

Anglo-German Walks

4th Friday 10.00am
Interested contact Dick Chapman.

Antiques

2nd Tues of the month
2.00pm-4.00pm at my home. NB NEW TIME
Our subject this month was Toys and Samplers, and as usual my lovely members brought some interesting personal belongings to mull over, from a beloved - and rather well worn - teddy bear, to more up-to-date glove puppets, of Sooty and Sweep (remember them?!), Basil Brush et al. Great fun. A rather more sombre note was discussed when we realised that the Victorians, who loved their children to embroider samplers, gave them such morbid rhymes to embroider - and these must have taken many weeks, with such tiny stitches, about death and dying. One wonders what impression these must have made on such young children, some only aged 6 years, especially as child death rates in Victorian times were so prolific. But the workmanship was absolutely exquisite. I hope they were rewarded in some way.

10 Nov Books, printing, etc.

Art Appreciation

2nd Mon 10.00 for 10.30am at Hollytree House.

At our last meeting Kathy McMahon showed us some wonderful Victorian portraits explaining how and why they were created. The Victorians had a strong sense of self image and with the new medium of photography Portraiture became ever more popular.

9 Nov Pat Woollard will bring us right up to the present with 20C portraits.

14 Dec Bring a dish (sign up) Christmas Party, preceded by 'Yes but is it Art?' by Phil McMahon.

Beginners Bridge

Alternate Weds 10.00am-12 noon. This is rapidly becoming a group of intermediate bridge players, more or less launched on the world to swim in wider streams, so they will now move to Tuesday afternoons and form a new Intermediate Bridge group. Time/ date??? Ed.

This means that the Beginners Bridge group has vacancies. Please would anyone interested in joining either group sign on the appropriate list at the next U3A monthly meeting or contact Sue Winterbotham. We play the Acol Weak No Trump system.

Book Discussion Gr

4th Mon 2.00pm-4.00pm
We will tackle a selection of old classics, "The Mill on the Floss" by George Eliot, novels by Graham Swift and Amitav Ghosh and, later, the biography by Diane Athill. All are supplied by the library in as many copies as we need. New members welcome.

Chess

2nd & 4th Tues 9.30am

Computers 3rd Thurs

2.00pm Thorpe Community Room, Garston Fire Station, St Albans Road, (Next Asda)
19 Nov Using mail merge to print Christmas card addresses
There is a charge of 50p per person to cover costs.

Cryptic Crosswords

1st & 3rd Fri of the month.

Current Affairs

3rd Tues 10.00am
Hollytree House.
We had no discussion meeting in October but instead many of us joined a party from the Watford Park U3A Current Affairs Group for a visit to the Houses of Parliament. A very interesting tour in the morning was followed by spells in the Commons' Visitors' Gallery for some of us for a session of Question Time, and in the

Lords' Gallery for others to hear Lord Mandelson on the Post Offices problems.

17 Nov meeting as usual.

Cycling

10.00am 1st Mon & 3rd Wednesday starting at Watford Met Station.

2 Nov Flaunden, Latimer, Chenies and Sarratt.

18 Nov Pot-Pourri or dog's breakfast.

7 Dec Chiswell Green, St Albans.

16 Dec Denham.

17 Dec Thur American supper chez Y & D.

European Studies

4th Wed 10.00am

The social Life of Europe.

Exploring London

4 Nov Imperial War Museum
1 ticket is now available. If any member would like to join us, please contact Terry Waterfall.

Film Group

1st Thurs 2.15pm

5 Nov "Sliding Doors" (Director Peter Howitt) (1998) Gwyneth Paltrow and John Hannah. There are two sides to every story. Helen is about to live both of them at the same time. Romance was never this much fun.

3rd Dec 'A River Runs Through It' (Director Robert Redford) (1993) Craig Sheffer Brad Pitt Brenda Blethyn. Two fly-fishing sons of a Presbyterian Minister-one reserved, one rebellious-grow up in Rural Montana.

Food & Nutrition

Combewood House. 2.00pm
24 Nov Mrs. Barbara Owen will give a talk in her own humorous style on Healthy Eating. We will be holding a raffle and having a small pre Christmas celebration so don't miss this one. We will discuss what we are going to do in the New Year and decide on what our annual visit is going to be. If you would like to prepare something for this meeting to celebrate please let me know.

Gardening

3rd Thurs 10.00am

19 Nov Hollytree House.
Planning meeting, followed by a talk by Rev. David Ridgeway on "The History

and Care of Orchids".

17 Dec Hollytree House. Christmas Social. Let us know by the December Monthly meeting if you are able to come, and what nibbles you could bring.

Greetings Cards

Hollytree House

NB:- CHANGE. There will be no meeting in November. YF is away and the vote was to cancel this meeting.

10 Dec 12.00-2.00pm We will make boxes and small bags. We will also have our usual joint lunch, Each group can have a session before or after the lunch. Please bring your requests for next year's programme (this will include making cards for men/boys)

History

2nd Mon 2.00pm Fire Station
Garston (Asda CP off A41)
9 Nov & 14 Dec:
Looking at Georges III and IV and a quiz for the Christmas meeting.

Italian 10.00am alt Thurs

A self help group, using audio/visual material, written exercises and original Italian texts. We are guided by a fluent Italian speaker.

Luncheon Club

4th Wed in month

We are still up and running and would be pleased to see any members who would like to join us for lunch. Please phone Fay for further details.

MoneyMatters

1st Thurs Hollytree House; corner of Gammons Lane & Courtlands Drive, Watford 10.00am to Noon.
Yet again a well turned out group including a few new faces, even the old ones look good! Once again we had a varied and informative discussion on a wide range of financial subjects mostly resolved by discussion on an individual basis. I'm amazed at members' input and knowledge. As the information poster (on coloured paper) & on display shows that on Thursday 5th. November THIS WEEK we have a return visit from our favourite solicitor who

specializes in wills & probate and is dying to help you! Come and have a good time and at the same time get some useful information.

Music Appreciation

3rd Wed: 10.00am Coffee and chat. **10.30am** meeting.

Needlecraft

1st & 4th Mon Combewood House. Group full.

Opera

2nd Monday in month

2.00pm at Christine's house. In October David Hancox gave an excellent illustrated talk about different tenors, mostly from the past, comparing them singing the same arias, and then we discussed the different aspects of their voices and how they phrased the music. Thank you David for a most interesting afternoon.

The visit to see 'Turandot' had to be **cancelled** due to insufficient interest, but we will try again in the spring, perhaps for the Welsh National Opera who will be performing at Milton Keynes. **9 Nov** We shall be delving into the early opera works of Verdi with a viewing of 'I due Foscari' which is about 'The Two Foscari's' who are father and son, the father being the Doge whose son has been accused of murder. It is full of political intrigue and murder, so should be an interesting one.

8 Dec Our Christmas celebration (with mulled wine). Members are invited to bring along their favourite aria or scene from opera on CD, DVD or video to share with the rest of the group.

11 Jan 2010 'The Magic Flute' by Mozart

8 Feb The Damnation of Faust.

Panto Group

Rehearsals for the Christmas Show continue and some people already know their lines. (swats!) Lots of fun is being had by the members of the 'ballet class'. Watch this space and be sure to book **December 1st at 10.00am.**

Pathfinders Group

The Essex Arms **9.25am** **24 Nov** Letchmore Heath followed by Christmas Lunch at The Blue Check. PLEASE let Jan know if you are coming to the lunch.

Performing Arts

Johanna's Mon 7.30pm

Autumn Programme
The plays selected for discussion this season at Watford Palace Theatre, starting at 7.45pm.

2 Nov-7 Nov "Adolf Hitler: My part in his Downfall" by Spike Milligan. We shall be going to this on **Fri 6th Nov**. Please book your own tickets. **9 Nov** The discussion group for both plays will be at our house. 12 St Mary's Avenue, Northwood. **NOT** Johanna's. **11 Jan** The next Play Reading at 9 Nancy Downs. In the meantime some members of the group are rehearsing two sketches for the Christmas show. Look forward to seeing you soon.

Photo Manipulation

Falconer School, Bushey
2nd Tuesday of the month
4.00pm-5.30pm

Poetry Read & Study

Monday evening, monthly by arrangement. New members welcome.

Return to Cycling

2.00pm 1st Thursday
5 Nov, 3 Dec.
This group is run jointly with Watford Park U3A. Short rides in the Watford area based on the Watford Council map, starting at the Pump House at **2.00pm.**

Science Interest

3rd Monday 10.00am
16 Nov The Mars Phoenix Project: Pat Walker
21 Dec Criminology – Colin Richards
18 Jan visit to Natural History Museum – fully booked
New members welcome!

Scrabble 1

2nd and 4th Thursdays.
Our group is still full.

Scrabble 2

2nd Thurs 10.00am.
Our group is now full. Maybe someone would wish to start **Scrabble 3?**

Shakespeare

Last Wed 2.00pm

25 Nov NB EARLY START.

We are going to watch the BBC DVD of: 'The Merry Wives of Windsor'. It is a long play, nearly 3 hours, so we are going to start at 1.00 pm, instead of the usual 2.00.

Dec No meeting.

27 Jan 2010 will be our next meeting.

Snooker

Every Monday (except Bank Holidays) **11.00am-1.00pm.**
Joint Group with WPU3A.

Sporting Forum

Ian Smithson, a Regional Director with League Football Education was the guest at our October meeting and gave an interesting and informative presentation as to how apprentice footballers are educated in addition alongside the skills they display on a soccer pitch.

17 Nov sees a welcome return of Morley Myers, an International journalist who has attended more high profile sporting events than runs scored by the England cricket team in 20/20 games.

15 Dec Social afternoon with quiz.

19 Jan Anthony Matthews – Sports Editor, Watford Observer.

Strollers

2nd & 4th Tues 11.00am

New members welcome.

Distances are not shown but are usually 2.5 to 3 miles.

10 Nov Pat (Lucas) -Canal walk at Harefield Park and eat at the Coy Carp.

24 Nov Phil -Walking around Bricket Wood. Park and eat at The Moor Mill in Smug Oak Lane, Bricket Wood.

8 Dec Margaret and Wendy-Rickmansworth Aquadrome CP & eat (bring Binoculars).

12 Jan New Year celebration Planning Meeting at Peggy's, followed by lunch at the Southern Cross.

26 Jan Jane and Myra -Walk around Chorleywood Park and eat at the Black Horse

The Explorers

Change of Plan. By the time you read this we will have enjoyed a walk in Valley Gardens near Windsor, led by

Jean & John Dolamore.

6 Nov 9.30am Essex Arms or **10.00am** at the road end of Monument Road, Ashridge. Eat in 'Valiant Trooper', Aldbury. Bring strong walking shoes or boots, lightweight waterproof, and something to drink on the way
4 Dec is a planning meeting at **143 Oaklands Ave.** Bring along ideas for walks in 2010.

The Rock 'n' Roll Yrs

4th Thursday each month
2.30pm Hollytree House.

Contact: Andrew Cannon

26 Nov Eddie Cochran and Gene Vincent.

Dec NB : No meeting!

Thirsty Walkers

Every 4th Thurs.

The Essex Arms at **9.30am** to share cars.

26 Nov This is the last walk of the year. Led by Alan Betts and Jill Jenkins through Wigginton starting from The Greyhound. We hope to have some menus available for the New Year Lunch at this time.
28 Jan 2010 Put this date in your diary. It will be our next Planning Meeting followed by the New Year Lunch at the Southern Cross.

Toffee aka Tea/Coffee

Group 3rd Thursday

10.00am-12.00 noon.

This month we were a large group with a good mix of humour and knowledge, so there was a very companionable buzz about the morning. At one point we tried to work out how many topics we had touched on and were very surprised when we realised just how many we had talked about and what they were. Just sitting and listening for a short while it is amazing how much one can learn from just a 'throw away remark' and of course we never forget the name of the group and act upon it.

Tuesday Trekkers

Meet 9.45am start at 10.00am.

10 Nov Carol and Alan will take us round in circles of Bentley Priory, Stanmore. CP Old Redding opposite Grim's Dyke Hotel.

8 Dec Brian. Big choice of

walks from Chipperfield, which one will he do? Probably get lost as usual. CP by Church Chipperfield.
12 Jan Another Blockbuster from Dennis by special request to include Galleria and bus passes. Numbers will be restricted and no bicycles allowed. Watch this space!

U3A Singers

1st & 3rd Monday 2.30pm
Anyone interested in joining the group is more than welcome to come along to our next meeting.

Walking

Most walks start at JS A41
Eight Miles 9.30am
11 Nov Codicote.
9 Dec Sarratt.
Six miles 10.00am
11 Nov Tring Lakes.
Dec No Walk.

Wine Appreciation Last Friday in the month. Writers Workshop

Come and develop your writing skills. New members welcome.

Thank you to you all, especially Study Group Leaders, who have sent in Articles, News and Photographs

Vue Cinema senior screening

Films are shown each Monday at 12.00 for Senior Citizens and include tea and biscuits for £3.50. (*can't be bad*). titles can be obtained on line or by telephone 08712 240240

WATFORD BOYS SCHOOL COMPUTER COURSES

The Preliminary programme for a further series of courses, in conjunction with Watford Park U3A, is planned for the autumn term as follows:

Excel – Intermediate (3wks 4th, 11th and 18th November)

Excel – Advanced (1wk 25th November)

Housekeeping – (1wk 2nd December)

Cards/Posters/Flyers – (2wks 9th and 16th December)

Helpers: Are you able to volunteer to help during these courses? If yes please give me a ring or email with availability. Without a team of helpers the attendees will not gain the full benefit of these short courses.

These courses are held at Watford Boys' Grammar School, Rickmansworth Road on Wednesday 4 – 5.30pm – term time
If you are interested in attending any of the above courses please contact Danny Desmond 225648 or Jean Fuller 238858 email daniel_g_desmond@tiscali.co.uk

Peace Hospice Raffle

We look forward to the Christmas raffle in December will be bigger than ever. Thank You for your donations which we can collect or you can bring them along to any Meeting.

June & John Baughen

ENGLISH CLASSICAL PLAYERS

The Watford Colosseum will close for refurbishment in 2010 so another season of five great concerts will run from 24th September to 30 December 2009, all preceded by a Pre-Concert talk with musicians at 6.30 pm, concert at 7.30 pm.
Sun 8 November 4.00pm
Organ Recital by Thomas Trotter will precede the talk and Purcell School Symphony Orchestra Concert
www.watfordconcerts.com
or telephone 01923 888320

Watford U3A's Projector & Laptop computers

To check availability and make a booking for a digital projector & a laptop computer contact:-

Colin Richards

digitalequipment@watfordu3a.org.uk

Find Out How to Use Our New Digital Equipment

Have you signed up for this course yet??

The bad news is our old projector died on the last training course!!! (Not me gov!) The good news is we have a new projector! but do YOU and several members of your group (you might want to go on holiday) know how to use this one?? We also have a new screen and 2 'state of the art laptops' come and see. Ed.



A big thank you to all of those who donated their obsolete spectacles; the response was excellent and by popular request Jacqueline will collect again in November for the last time this year.

Committee members

Chairman

John Carleton

Secretary

Yvonne Fitton

**Study Group
Coordinator**

Margaret Foster

WU3A Almoners

Irene Lowe

Peggy Element

Janet Carleton

Kathleen McMahon

JB Computer Services

01923 230607

jb.computerservices@yahoo.co.uk

Computer Repair Home visits

**Viruses cleaned; Memory upgrades; Data backups
Price agreed in advance
10 years repairing PCs
John Boughton**

MICROSOFT OFFICE PROFESSIONAL WORD, EXCEL, ACCESS, OUTLOOK, POWERPOINT, PUBLISHER.

MRP Cost: £400+ special offer to bona fide members of the U3A ≈ £97

Contact: THE THIRD AGE TRUST 19 East St. Bromley Kent BRI IQH

tel 02084666139 email:

national.office@u3a.org.uk

Monthly Meeting's Talks 1st Tuesday

10.00am – 12.00noon.

3 Nov is Diane Randall Bees both honey & bumble and Manuka honey.

1 Dec 'The Christmas Variety Show' with The Performing Arts Group and The Panto Group.

5 Jan David Ball: Magic and the Magic Circle inc Tommy Cooper stories.

2 Feb Brendan Larvor: [Univ. Herts] Philosophy.

For More detail contact Speaker Secretary:-

David Helliwell

speakers@watfordu3a.org.uk

Material for the
December Newsletter

MUST be received by: 20 November

For Written contributions see Study Group Diary or the website contact details.

E-mail copy to:

editor@watfordu3a.org.uk